



F&F Filipowski sp. j.
ul. Konstantynowska 79/81
95-200 Pabianice, POLAND
tel/fax 48 42 2270971
e-mail: fif@fif.com.pl

DRM-04

PLAFOND LED
with
microwave motion detector



www.fif.com.pl

F&F products are covered by an 24 months warranty from date of purchase

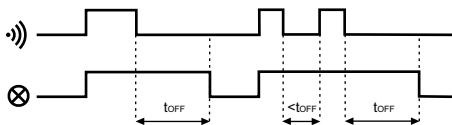
PURPOSE

The motion detector is used for automatic, temporary switch ON the lighting if a person or another object appears in detector's range in places such as hallways, courtyards, approaches and driveways, garages, etc.

FUNCTIONING

DRM sensor emits and bounces high-frequency 5,8GHz electromagnetic waves. The sensor detects changes in the reflected waves caused by movement of an object in the area of detection. The sensor detects movements of an object to and from the sensor. Movement in the range of detection will automatically switch ON the lighting. Since the moment of lighting is switched, continuous movement in detection area causes permanently lighting switch. Next move in detection area and its loss during the time countdown will start the time of sustain from the beginning.

DIAGRAM



TECHNICAL DATA

supply	230V AC 50Hz
light source	96xLED
light color	6000K
electric power of LED	15W
frequency of the microwaves radiation	5,8GHz
power radiation	<0,2mW
detection range	360°
detection ray-adjustable	2+10m
activation threshold-adjustable	2+2000Lx
receiver's activation time - adjustable	5sec+20min
activation delay	1sec
power consumption of detection sensor	0,9W
working temperature	-25+50°C
connection	6xLY 0,75mm, l=10cm
dimensions	Ø295, h=100mm
fixing	4 screws to the substrate
shade	jointed, milk-white
protection level	IP54

ATTENTION!

1. LED luminaire is functioning properly if all the seals are in place
2. Not remove the shade when the overhead lights are switched on
3. Repair damaged LEDs can be make only by a authorized service

After this time lights will switch OFF automatically. The motion sensor is equipped with light dependent relay which not able to attaching lighting during the day. Detection status and stand-by to switch ON lights are activated after dusk. Sensor activation time might be adjust by the user. In addition, there is possibility of adjustment of the detection area in range 2-10m (for h=2,5m) and the receiver actuation time adjustment to 5sec-20min.

ATTENTION!

Microwaves radiation power is relatively low and is completely safe for humans and animals. Its value is less than 0.2 mW. For comparison, microwaves and mobile phone radiate with the power of about 1000mW (500 times harder).

SETTINGS

Area of the detection (range)



Beam of detection sensor can be adjusted in the range from 2m to 10m (the parameters for the sensor mounted at a height of 2.5 m) Turning to the right [max] increases the area of the detector, turn left [min] decreases the detection area.

Activation time



Activation time of receiver can be adjusted in the range from 5sec to 20min. Turning to the right [max] increases the activation time, turn left [min] decreases the activation time.

Sensitivity of twilight switch



Sensitivity of twilight switch can be adjusted in the range from 2Lx to 2000Lx. Turning to the "moon" - switch ON later, turn to "sun" switch ON earlier. That the sensor will active throughout the day to set up the knob toward the sun.

ASSEMBLY

1. Take OFF the power.
2. Remove the shade and mount ceiling mounted to the substrate
3. Connect power cables accordance to wiring diagram.

ATTENTION!!

After power has been given the DRM for the first 10sec is inactive

4. Set detection area, sensitivity of twilight switch and activation time.
5. Put the shade.

WIRING DIAGRAM

